

We build a better future

Robex 35z-9

With Tier 4 Engine installed



*Photo may include optional equipment.

Pride at Work

Hyundai Heavy Industries strives to build state-of-the-art earthmoving equipment to give every operator maximum performance, more precision, versatile machine preferences, and proven quality. Take pride in your work with Hyundai!



*Photo may include optional equipment.

Machine Walk-Around

Rugged Upper and Lower Frame

The upper frame is designed to be heavy duty to absorb high stress load on the job. X-leg center frame and reinforced box section track frame provide exceptional strength and longer service life to withstand tough working conditions.

Engine Technology

The R35Z-9 is powered by a proven and reliable, Tier 4 certified YANMAR 3TNV88. This engine provides efficient fuel combustion and reduced noise.

Efficient Control System

Control devices are all conveniently located for improved operator comfort and productivity. A safety lever on the left-side console is designed to prevent exiting the cabin while hydraulic controls are live.

Advanced Hydraulic System

The R35Z-9 hydraulic system is precision designed for fast operation with fine control capabilities.

Comfortable and Durable Cabin

The cabin is roomy and ergonomically designed, with reduced sound levels and good visibility. Both canopy and cabin style frames meet international standards TOPS, ROPS, FOPS ensuring operator's safety.

Operator Convenience

The R35Z-9 features a suspension seat, foldable pedals for added space and multiple storage compartments. The monitoring system includes seven warning indicators, water temperature gauge, fuel gauge and hour meter for productive, convenient operating.

Easy and Simple Maintenance

An adjustable suspension seat, wrist rests, ergonomically designed joysticks and plenty of leg room help to reduce operator fatigue. A array of indicators and gauges are displayed on the monitor which keep the operator aware of machine performance at all times. The monitoring system includes seven warning indicators, water temperature gauge, fuel gauge and hour meter.

Extended Life of Components

The R35Z-9 reduces operating costs over time with long life hydraulic filters, hydraulic oil, shims and bushings.

Preference

The R35Z-9 offers an operator an optimal work environment with a cabin designed for comfort and sophistication. Operating R35Z-9 is unique to every operator. Operators can fully customize their work environment and operating preferences to fit their individual needs.



*Photo may include optional equipment.



Monitor

The monitoring system of the R35Z-9 provides the operator with machine status information, including: engine oil pressure, battery charge, engine coolant temperature and a fuel gauge.

Comfortable Operating Cabin

In a 9 series cabin, you can easily adjust the seat and wrist rests settings to best suit your preferred operating condition.

1. All pedals are foldable for additional floor space. Foot rest, attachment pedal, left and right travel pedals and boom swing pedal are arranged for convenient access.
2. Two cup holders are integrated into the right console for large and small drink storage.
3. An additional storage box with key lock is accessible under the operator's seat.
4. Adjustable wrist rests provide additional comfort.
5. A sliding fold-in front window is easily opened and safely stored in an open position to improve ventilation and visibility.(Cabin type only)

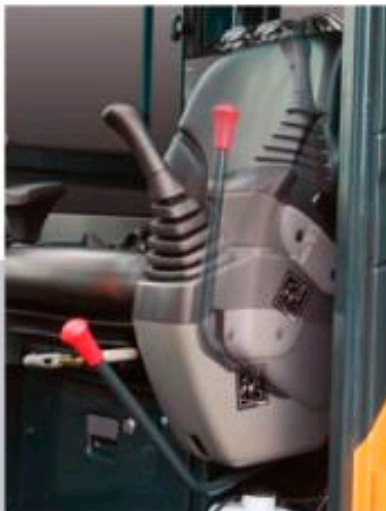


Reduced Stress

An operator's work environment should be stress free. Hyundai's R35Z-9 compact excavator is designed for comfort, reduced sound and plenty of space to reduce stress on the operator.

Operator Comfort

The left and right control levers are ergonomically located for convenient access. A safety lock system is designed to prevent exiting the cabin while hydraulic controls are live. When the safety lever and left side console are positioned upright, hydraulic functions are disengaged.



A tiltable left-side console make the operator easier to enter and exit the cab.



Performance & Precision

New technologies designed to improve performance and precision, make the R35Z-9 smooth, fast and easy to control.



*Photo may include optional equipment.



Boom Swing

The R35Z-9's boom swing function is designed for efficient work in congested residential and urban areas. The boom can be offset left or right within an operating range.

Improved Hydraulic System

Optimized matching between the joystick and main control valve improves fine control and smoothness of operation. An arm flow summation system provides energy savings, reduced cavitation and increased speed. To improve safety and avoid boom drift the R35Z-9 is equipped with an integrated boom holding system.



Structure Strength

The R35Z-9 cabin structure has been fitted with stronger but slimmer tubing for added safety and improved visibility. Low-stress, high strength steel is integrally welded to form a stronger, more durable upper and lower frame. Structural integrity was tested by way of FEM (Finite Elements Method) analysis and long-term durability tests.



Zero-tail Swing

R35Z-9's short tail swing radius allows the operator work in confined areas like close to buildings on roadways, and in urban areas. This compact radius design provides easy and efficient operation in any limited space work environment.

Yanmar 3TNV88

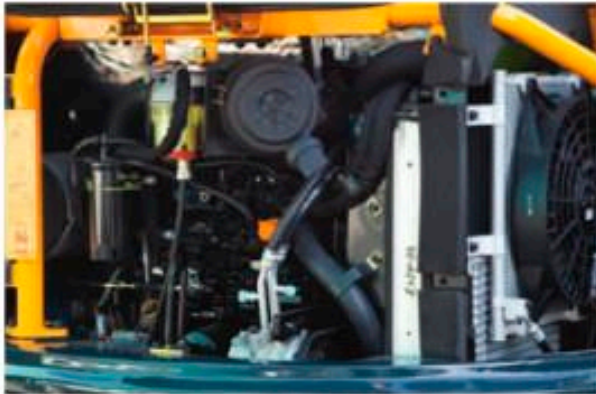
Tier 4 certified, Yanmar 3TNV88 engine provides maximum power, reliability, optimum fuel economy, and reduced emissions.

Profitability

R35Z-9 is designed to maximize profitability through improved efficiencies, enhanced service features and longer life components.



*Photo may include optional equipment.



Easy Access

The R35Z-9 was built with accessibility in mind. All doors, covers and hoods were built for complete open access. Regular service and maintenance is easy and convenient with the R35Z-9.



Easy Change Air Cleaner

The R35Z-9 is equipped with a durable plastic air cleaner designed for easy maintenance.



Lever Pattern Change Valve(option)

Joystick control patterns can be changed through an optional pattern change valve positioned for easy access.



Extended Life Components

Reliability is improved and maintenance costs are reduced due to long-life hydraulic filters (1,000 hrs) and hydraulic oil (5,000 hrs). The addition of lubricated bushings and resin shims has extended lube intervals throughout the attachment to 250 hours.

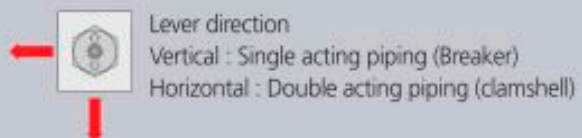


Centralized Grease Fittings

A centralized lubrication bank is available for faster, easier service and maintenance.

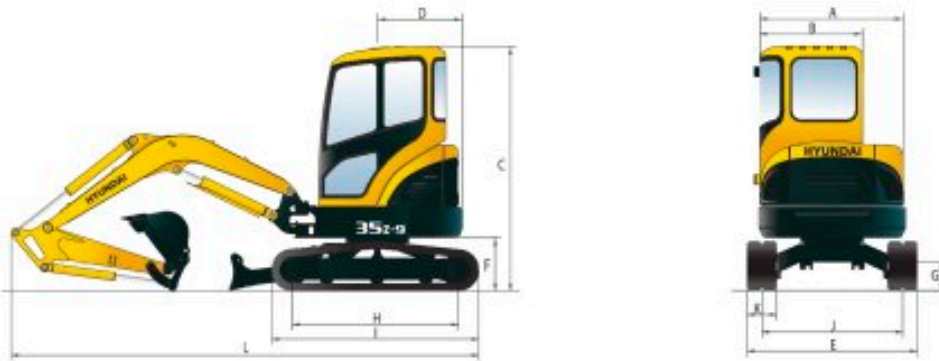


Selector Valve for Single or Double Acting Piping



Dimensions & Working Range

R35Z-9 DIMENSIONS

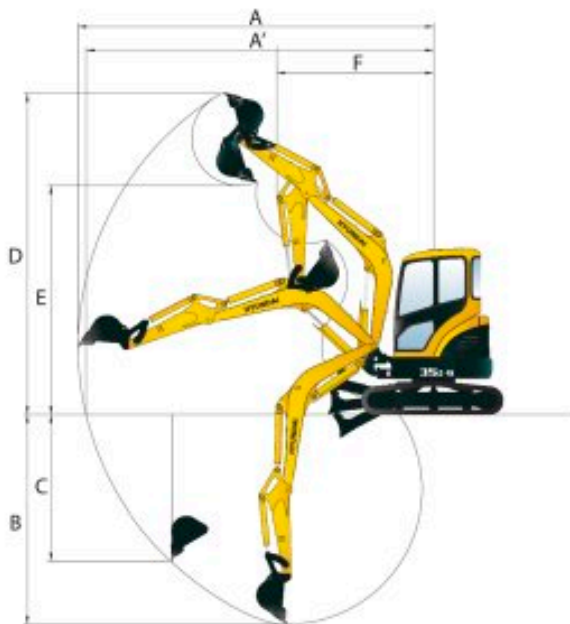


mm (ft-in)

A	Overall width of upper structure	1,500 (4' 11")	G	Ground clearance	290 (0' 11")
B	Overall width of cab	1,050 (3' 5")	H	Tumbler distance	1,700 (5' 7")
C	Overall height of cab	2,500 (8' 2")	I	Track length	2,130 (6' 12")
D	Tail swing radius	870 (2' 10")	J	Track gauge	1,440 (4' 9")
E	Overall width	1,740 (5' 9")	K	Track shoe width	300 (0' 12")
F	Clearance under counterweight	540 (1' 9")	L	Overall length	4,790 (15' 9")

R35Z-9 WORKING RANGE

mm (ft-in)



	Boom length	2,500 (8' 2")
	Arm length	1,300 (4' 3")
A	Max. digging reach	5,360 (17' 7")
A'	Max. digging reach at ground	5,240 (17' 2")
B	Max. digging depth	3,150 (10' 4")
C	Max. vertical wall digging depth	2,190 (7' 2")
D	Max. digging height	4,830 (15' 10")
E	Max. dumping height	3,450 (11' 4")
F	Min. swing radius	2,350 (7' 9")

* Standard and optional equipment may vary. Contact your Hyundai dealer for more information. The machine may vary according to International standards.

* The photos may include attachments and optional equipment that are not available in your area.

* Materials and specifications are subject to change without advance notice.

* All imperial measurements rounded off to the nearest pound or inch.

PLEASE CONTACT

HYUNDAI
HEAVY INDUSTRIES CO., LTD.
CONSTRUCTION EQUIPMENT

Head Office (Sales Office)

1 JEONHA-DONG, DONG-GU, ULSAN, KOREA TEL: (82) 52-202-7970, 7728, 0971 FAX: (82) 52-202-7979, 7720

Americas Operation: Hyundai Construction Equipment Americas, Inc.

955 ESTES AVENUE, ELK GROVE VILLAGE, IL 60007, U.S.A. TEL: (1) 847-437-3333 FAX: (1) 847-437-3574

Europe Operation: Hyundai Heavy Industries Europe N.V.

VOSSENDAAL 11, 2440 GEEL, BELGIUM TEL: (32) 14-56-2200 FAX: (32) 14-59-3405

India Operation: Hyundai Construction Equipment India Pvt., Ltd.

PLOT NO A-2, CHAKAN INDUSTRIAL AREA, VILL - KHALUMBRE, TALUK - KHED, DIST - PUNE 410 501, INDIA
TEL: (91) 21-3530-1700 FAX: (91) 21-3530-1712