

SENEBOGEN

Vollhydraulischer Teleskopkran -
Fully hydraulic Telescopic Crane -

630 R-HD



2. Kranwinde option
2. Cranewinch option

- Lifting Capacity up to 35 t
- Engine output 150 kW (204 HP)
- Separate hydraulic circuit for swing operation
- Most modern load-sensing hydraulic system
- Robust, very service-friendly design
- Very Strong B6 tractor tracks up to 4 km/h

Specifications



Engine

Deutz Diesel engine BF6M1013EC, with direct injection, water-cooled. Output as per DIN/ISO: 150 kW (204 HP) at 2000 rpm. Dry air filter with cyclone preliminary filter, safety element and pollution indicator. Fuel tank capacity: 260 l, Electric system 24 Volt, 2 highly efficient cold starting batteries



Hydraulic System

Load-sensing hydraulic-system. The variable displacement piston pumps are equipped with pressure cut-off function and with an energy-saving flow-on-demand control. Through the independent and proportional feed of the oil flow all working functions can be operated parallel, independent and very precise. High efficiency through well designed hydraulic valves and lines. Separate swing pump for individual and precised swing operation. Flow rate 1 x 260 l/min, working pressure 330 bar and 1 x 40 l/min. working pressure 250 bar. Hydraulic tank capacity 400/360 l. Hydraulic oil filter with long time change interval. Healthy oil temperature through high dimensioned hydraulic oil cooler. Central service board for easy and rapid check of complete hydraulic-system. Servo joy sticks for operating movements and additional functions as per ISO-System.



Swing System

The swing operation is driven independently through a separate hydraulic pump. Axial piston motor, spring-loaded hydraulically releasable multiple-disk brake, planetary gear and pinion shaft. Large dimensioned swing bearing. Swing speed 0 – 2,0 rpm, infinitely controllable. Hydraulic motor with integrated brake valves for reduction of wear in braking system to a minimum.



Undercarriage 630 R-HD

Each track is independently driven by an axial piston motor through planetary final drive. The drives are integrated into the track frames and protected by covers. Spring loaded hydraulically releasable multiple-disk brakes as safety parking brakes for reliable stopping. Undercarriage hydraulically extendable. Maintenance-free track-type B6 with 700

mm triple-bar-grouser track pads and hydraulic track-tensioning device. Travel speed 0 – 4 km/h, 2-speed travel motors. Extremely high traction force and good ground clearance to ensure excellent rough terrain travel. Option: flat track shoes



Upper Structure

Torsion-free upper frame with continuous bearing-plates for optimal power introduction, precision machined. Steel-bushes for the boom-pivot. Special sound insulation for the engine. Large lockable storage compartment. Excellent design. Counterweight 4,2 t



Operator's Cab

Comfortable F 2000 operator's cab, resiliently mounted, with exceptional sound suppression, large-capacity compartment with excellent allround visibility, all-weather design with tinted safety glass, front windscreen with ventilation position stows under the roof, large-size skylight, window wiper/washer system for front windscreen and skylight, front guard panel, large-capacity stowage rack, ergonomically designed comfortable seat, resiliently mounted, adjustable in suspension and height, seat cushion adjustable in depth and angle, adjustable lumbar support, wide adjustable armrests, clearly laid out instrument panel with ergonomically shaped control levers, adjustable steering column, infinitely variable cab heating system, outside air and circulating air stages, with particle filter. Five adjustable air vents for optimum work environment, new SDS diagnostic system for monitoring of all essential machine and engine functions, includes visual and audible warning of any malfunctions, wide range of additional features and equipment



Working Equipment

Telescopic four-piece boom, hydr. extend-and retractable. Boom hoist cylinder and telescopic cylinder with safety check valves. Hoist winch via hydraulic motor with safety valve and planetary gear with safety multi-disk-brake in the oil bath. Line pull max. 40 kN, hoist speed max. 0 – 95 m/min, rope dia. 14 mm. Jib, adjustable (0°/40°), it can be mounted very fast and very easily without any helping devices. If fly jib is not used, it can be locked on the side of the main boom. Safety equipment according German and European regulations. Safe load indicator (SLI) with clear text indi-

cation of boom angle, boom length and radius, hoist end switch. Certification according to CE regulations.



Service Weight 630 R-HD

Service weight complete with telescopic boom, jib, 20 t hook and track-type B6 with triple-bar track shoes:

700 mm: 34,4 t – 0,52 kg/cm² ←
800 mm: 35,0 t – 0,46 kg/cm²
900 mm: 35,6 t – 0,42 kg/cm²

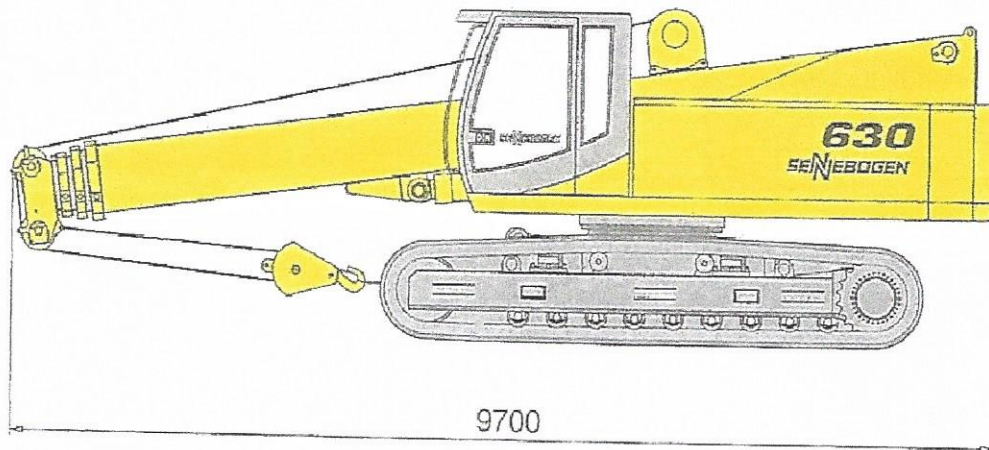
Additional weight for 700 mm flat shoes instead of triple bar shoes is approx. 1t

**Reliable
Versatile
Cost effective**

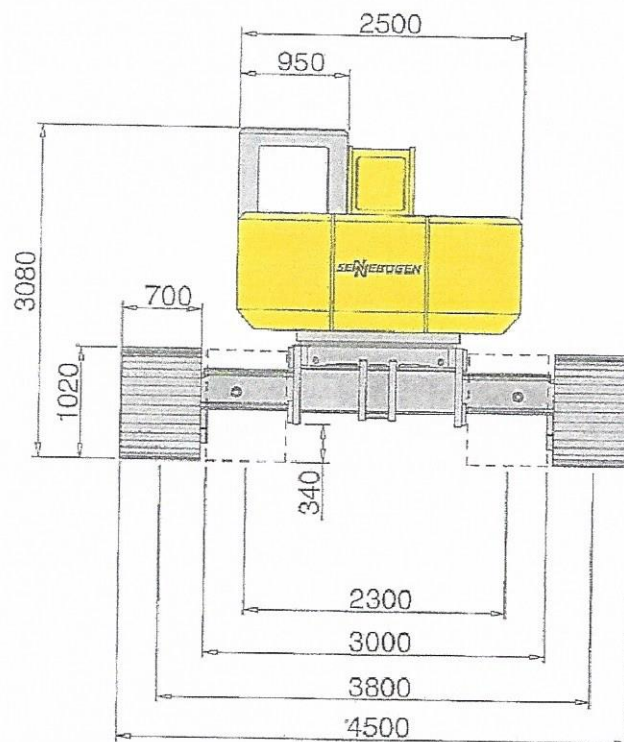
Subject to technical modification!

Maße
Dimensions

630R-HL



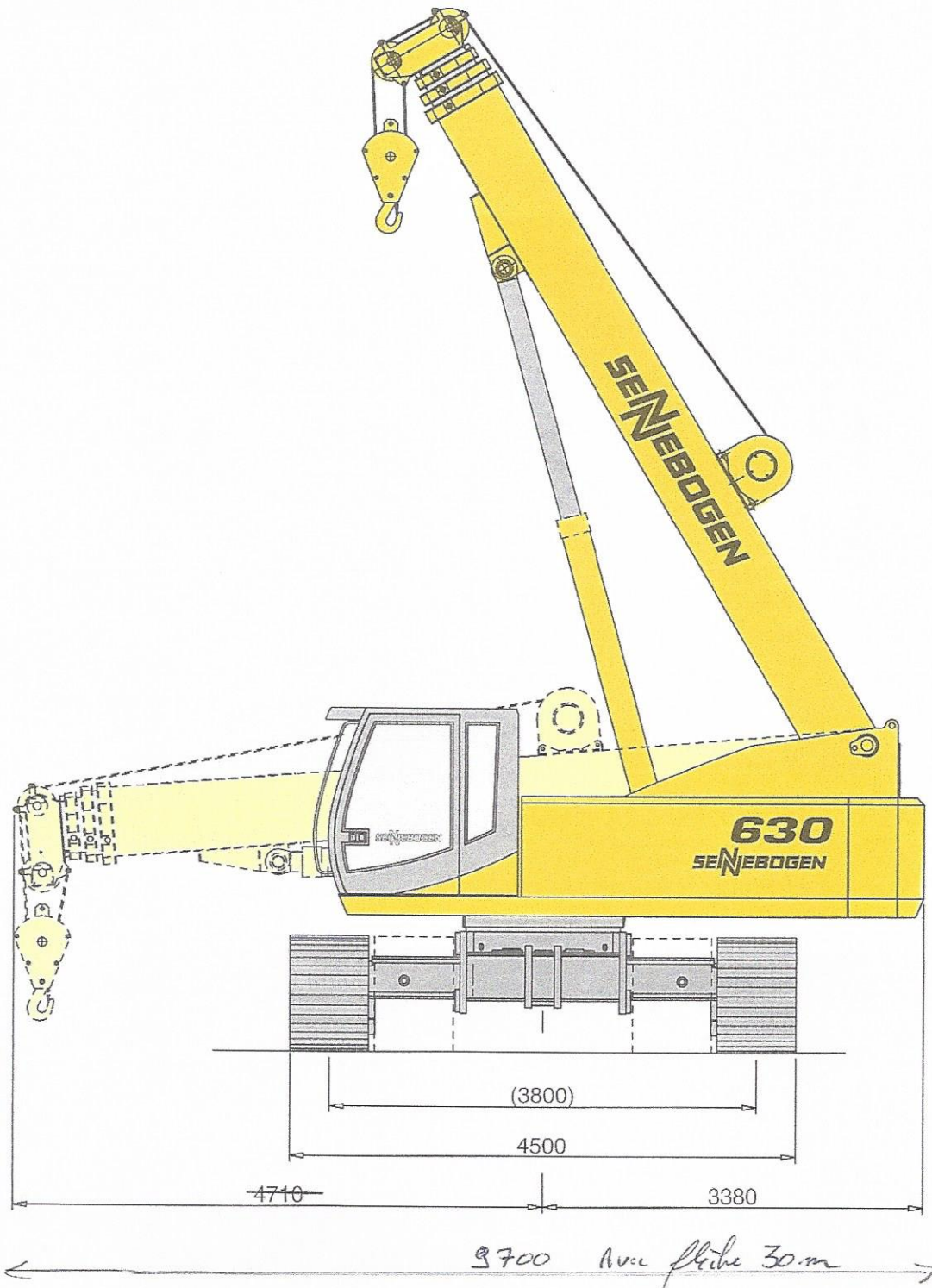
630 R-HD - mit 30,0 m Teleskopausleger
- with 30,0 m Telescopic boom



630 R-HD - der kompakte und Leistungsfähige Teleskopkran kann auch auf engstem Raum optimal eingesetzt werden - ob auf der Baustelle, im Tunnelbau, in engen innerstädtischen Baustellen oder in Industrieanlagen und Industriehallen.

630 R-HD

630 R-HD - The compact and efficient telescopic crane can be put to optimum use also in very confined work spaces - whether on construction sites, in tunneling, on tight inner-city job sites or on industrial premises and in industrial halls.



Tableaux de charges limites

TAB : 630R-HD-30.0/75/2000(1200)/5.0/04.01
TAB : 630R-HD-30.0/S7,5/75/2000(1200)/5.0/04.01
TAB : 630R-HD-30.0/75/2000(1200)/5.0/04.03 S

Charges



Remarques

Les valeurs de charge

- sont valables pour
 - une machine sur sol plat et solide
 - écartement maximal (minimal) du châssis
- respectent les normes suivantes :
 - DIN 15018
 - ISO 4305
 - NEN 2022 (y compris angle d'inclinaison 4,5°).
- sont indiquées en tonnes (t) et valables pour 360 degrés.

Retirez le poids du dispositif de suspension de charges (crochet, suspension) des charges.

Conditions défavorables

Limitez ou réduisez les valeurs de charge afin de prendre en considération les conditions défavorables. Les conditions défavorables sont p.ex.

- sol meuble ou inégal
- pente
- vent
- charges latérales
- charges oscillantes
- à-coups ou arrêt soudain de la charge
- manque d'expérience du personnel
- Translation avec charge

Contrainte de câble autorisée

par brin en grutage :

avec diamètre de câble de 14 mm | 3.500 kg

Equipement de grue

Flèche principale 30 m,
contrepoids 5,0 t

Ausladung Portée m	Auslegerlänge / Longueur de flèche in m						
	9,0	12,5	16,0	19,5	23,0	26,5	30,0
1,0	40,0* / 35,0 (35,0)	20,0 (20,0)	15,0 (15,0)	14,0 (14,0)			
2,0	40,0* / 35,0 (35,0)	20,0 (20,0)	15,0 (15,0)	14,0 (14,0)	11,0 (11,0)	8,9 (8,9)	
3,0	31,7 (22,9)	20,0 (20,0)	15,0 (15,0)	14,0 (14,0)	11,0 (11,0)	8,9 (8,9)	5,0 (5,0)
4,0	27,1 (13,9)	20,0 (13,7)	15,0 (13,6)	14,0 (14,0)	11,0 (11,0)	8,9 (8,9)	5,0 (5,0)
5,0	21,3 (9,7)	20,0 (9,5)	15,0 (9,4)	13,3 (9,9)	11,0 (10,2)	8,6 (8,6)	5,0 (5,0)
6,0	15,4 (7,2)	15,2 (7,0)	14,9 (6,9)	12,0 (7,3)	10,3 (7,6)	8,3 (7,9)	5,0 (5,0)
7,0	(6,2m) 11,9 (6,8)	11,7 (5,3)	11,6 (5,3)	10,9 (5,7)	9,5 (6,0)	7,8 (6,2)	5,0 (5,0)
8,0		9,4 (4,2)	9,3 (4,1)	9,7 (4,5)	8,7 (4,8)	7,4 (5,0)	5,0 (5,0)
9,0		7,7 (3,3)	7,6 (3,2)	8,0 (3,6)	7,9 (3,9)	6,9 (4,1)	5,0 (5,0)
10,0		(9,6m) 6,8 (2,8)	6,3 (2,5)	6,7 (2,9)	7,0 (3,2)	6,4 (3,3)	5,0 (3,5)
11,0			5,3 (2,0)	5,7 (2,3)	6,0 (2,6)	5,9 (2,8)	5,0 (2,9)
12,0			4,5 (1,5)	4,9 (1,9)	5,2 (2,1)	5,3 (2,3)	5,0 (2,5)
13,0			(13m) 3,8 (1,2)	4,2 (1,5)	4,5 (1,8)	4,7 (1,9)	4,7 (2,1)
14,0				3,7 (1,2)	3,9 (1,4)	4,1 (1,6)	4,2 (1,7)
15,0				3,2 (0,9)	3,4 (1,2)	3,6 (1,3)	3,7 (1,5)
16,0				2,8 (0,7)	3,0 (0,9)	3,2 (1,1)	3,3 (1,2)
17,0				(16m) 2,6 (0,6)	2,7 (0,7)	2,8 (0,9)	3,0 (1,0)
18,0					2,3 (0,5)	2,5 (0,7)	2,7 (0,8)
19,0					2,1	2,2 (0,5)	2,4 (0,7)
20,0					1,8	2,0	2,1 (0,5)
21,0					(20,1m) 1,8	1,8	1,9
22,0						1,6	1,7
23,0						(23,6m) 1,3	1,5
24,0							1,4
25,0							1,2
26,0							1,1
27,0							(27,1m) 0,9

TAB.-Nr. 630R-HD-30.0/75/2000(1200)/5.0/04.01

Charges avec flèche 0°
sur le corps de base

Ausladung Radius in m	Traglasten bei Auslegerwinkel 0° am Grundkörper / Lifting capacity with boomsquare 0° at basic boom						
	9,0	12,5	16,0	19,5	23,0	26,5	30,0
6,2	11,9						
9,6		6,8					
13,0			3,8				
16,6				2,6			
20,1					1,8		
23,6						1,3	
27,1							0,9

Flèche principale 30 m,
 contrepoids 5,0 t,
 flèche à bec

Ausladung Portée m	Auslegerlänge /Longueur de flèche [m]						
	9,0	12,5	16,0	19,5	23,0	26,5	30,0
1,6	6,0 (6,0)	6,0 (6,0)	6,0 (6,0)	6,0 (6,0)			
2,0	6,0 (6,0)	6,0 (6,0)	6,0 (6,0)	6,0 (6,0)	bei 2,5m: 6,0 (6,0)		
3,0	6,0 (6,0)	6,0 (6,0)	6,0 (6,0)	6,0 (6,0)	6,0 (6,0)	6,0 (6,0)	bei 3,5m: 5,0 (5,0)
4,0	6,0 (6,0)	6,0 (6,0)	6,0 (6,0)	6,0 (6,0)	6,0 (6,0)	6,0 (6,0)	5,0 (5,0)
5,0	6,0 (6,0)	6,0 (6,0)	6,0 (6,0)	6,0 (6,0)	6,0 (6,0)	6,0 (6,0)	5,0 (5,0)
6,0	6,0 (6,0)	6,0 (6,0)	6,0 (6,0)	6,0 (6,0)	6,0 (6,0)	6,0 (6,0)	5,0 (5,0)
7,0	bei 6,7m: 6,0 (5,0)	6,0 (5,2)	6,0 (5,2)	6,0 (5,6)	6,0 (5,9)	6,0 (6,0)	5,0 (5,0)
8,0		6,0 (4,1)	6,0 (4,0)	6,0 (4,4)	6,0 (4,7)	6,0 (4,9)	5,0 (5,0)
9,0		6,0 (3,2)	6,0 (3,1)	6,0 (3,5)	6,0 (3,8)	6,0 (4,0)	5,0 (4,9)
10,0		bei 10,2m: 6,0 (2,2)	6,0 (2,4)	6,0 (2,8)	6,0 (3,1)	6,0 (3,2)	5,0 (3,4)
11,0			5,2 (1,9)	5,6 (2,2)	5,9 (2,5)	5,8 (2,7)	5,0 (2,8)
12,0			4,4 (1,4)	4,8 (1,8)	5,1 (2,0)	5,2 (2,2)	4,9 (2,4)
13,0			3,7 (1,1)	4,1 (1,4)	4,4 (1,7)	4,6 (1,8)	4,6 (2,0)
14,0			bei 13,7m: 3,5 (1,0)	3,6 (1,1)	3,8 (1,3)	4,0 (1,5)	4,1 (1,6)
15,0				3,1 (0,8)	3,3 (1,1)	3,5 (1,2)	3,6 (1,4)
16,0				2,7 (0,6)	2,9 (0,8)	3,1 (1,0)	3,2 (1,1)
17,0				2,4 (0,5)	2,6 (0,6)	2,7 (0,8)	2,9 (0,9)
18,0				bei 17,2m: 2,3	2,2	2,4 (0,6)	2,6 (0,7)
19,0					2,0	2,1	2,3 (0,6)
20,0					1,7	1,9	2,0
21,0					bei 20,7m: 1,6	1,7	1,8
22,0						1,5	1,6
23,0						1,3	1,4
24,0						bei 24,2m: 1,2	1,3
25,0							1,1
26,0							1,0
27,0							0,8
28,0							bei 27,7m: 0,6

TAB.-Nr.: 630R-HD-30.0/75/2000(1200)/5.0/04.03 S



DANGER

Les valeurs de charge doivent être réduites lorsque la fléchette est montée sur la flèche principale.

Longueur de la flèche / Charges réduire

Länge Hauptausleger	Traglastreduzierung
9,0 m	570 kg
12,5 m	420 kg
16,0 m	330 kg
19,5 m	280 kg
23,0 m	240 kg
26,5 m	210 kg
30,0 m	180 kg